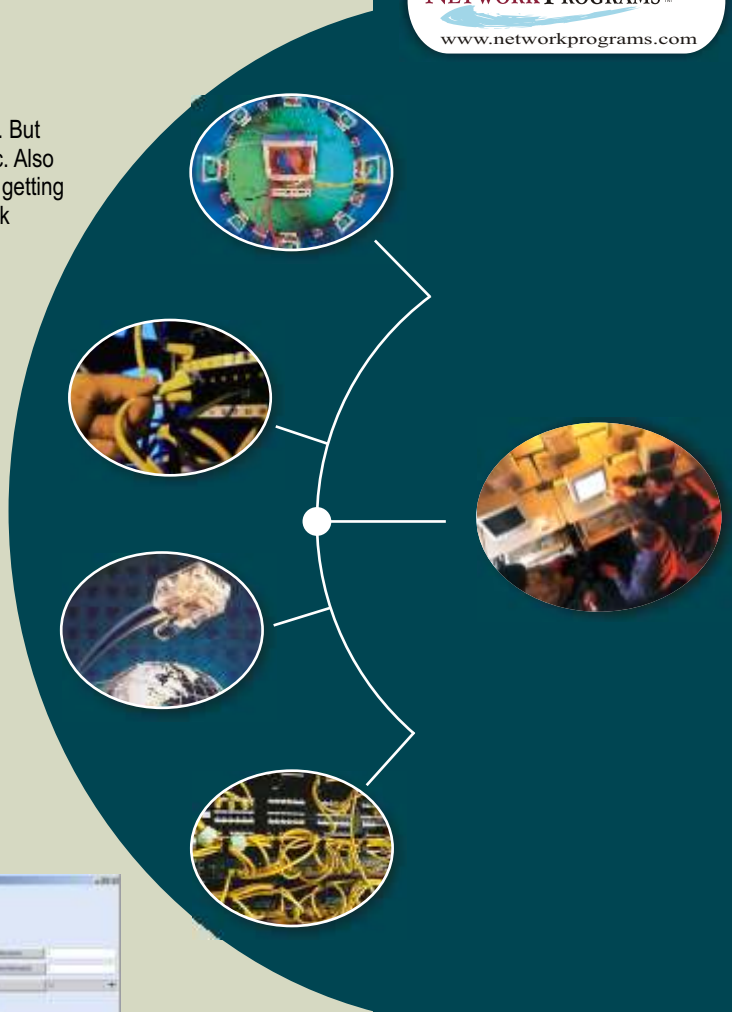


Internet Applications have seen a phenomenal growth in the recent years. But bandwidth congestion creates innumerable bottlenecks that impede traffic. Also vital increase in risks of unauthorized users getting into your network and getting access to vital information of networks is seen. Mix of traffic within network includes mission critical applications to suffer with respect to unwanted download. Increasing the bandwidth at such points will not resolve the congestion problems due to the tendency of applications to hog the bandwidth. Methods must therefore be found to ensure that network performance matches each application. The NetPacer family of products is the perfect solution to most of these problems. By positioning NetPacer at the edge of the Network, it can address the bandwidth needs of the customers. Solutions can be used in both service provider locations as well as in corporate environment It protects and monitors subscribers' critical traffic, enforces user policies, and ensures service-level commitments. Subscribers can choose between fixed or scaled bandwidth plans that ensure usage at pre-determined maximums. Service providers can provide enhanced services to clients by ensuring bandwidth (minimum and maximum), prioritizing the client's traffic based on protocol and applications. Product also supports valuable security and bandwidth optimization features for wireless network.



## Features

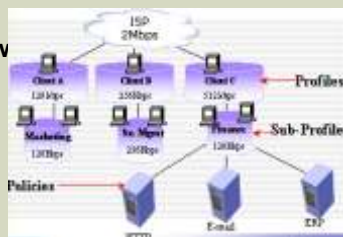
**Bandwidth Management-** Prioritization of bandwidth for 98 x 98 x 256 (profiles x Sub-profiles x Policies)  
On the basis of - IP Address, Application, Protocol, host, port number, MAC address, Subnet, source and Destination

**Class Based Queueing (CBQ) approach for packet forwarding**

**Two level of Hierarchical Link Management:**

**Bandwidth Management on Fixed and Sharing basis**

**VOIP/VIDEO Traffic Management**

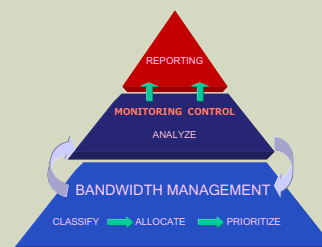


**Remote Management/Monitoring of Clients-**The service provider can also remotely manage the allocated bandwidth using

- Web Based control
- Console administration and control

### Powerful Statistics Monitor

- Provides traffic parameter graphs on real time basis.
- Real time Bandwidth Monitoring on protocol Application basis.
- Reporting of real time graphs for IP as well as Non-IP segments.
- Advanced Filtering and reporting mechanism for real time traffic.
- Real time bandwidth utilization and monitoring per profile.
- Real time monitoring of the bandwidth violators.
- Top 5 bandwidth utilization report.
- Historical reports of the parameters of each profile, users.
- Historical reports of the sessions made.
- Historical reports of bandwidth violators.



Set the pace  
with NetPacer

### Monitoring Tool (M-Tool)

- Traffic Measurement
- Traffic Monitoring

### LINK Monitoring support

Monitoring and reporting of link status for

- Latency
- Round trip delay
- Packet Loss

### SLA

Manages and enforces SLAs for customer and application of Bandwidth violation

### Hierarchical data storage of customer

Uses LDAP based policy repository for speed and remote machine management

### Fail-over Solution

Full redundancy for 24x7 availability for complete Statistics  
Hot Standby/'Wire Line' Fail over solution

### Plug and Play solution

Seamless integration into the existing network without any changes to the underlying network

### SNMP support

Monitoring of configured parameters through SNMP

### MAC Based

Policing of traffic based on MAC address

### IBM server Proven Software (Certified by IBM)

### Firewall Support Gigabit Support

### Wireless Network Support

### Easy to use

Well-packaged solution makes it easy to Install, Administer and Control.

NetPacer for corporate segments also provides preferential access to UDP traffic and RTP traffic to ensure that voice or video traffic is assigned the highest priority. It also prioritizes various mission critical applications like SAP, BAAN etc. It also enables an organization to set different Internet access priorities for different categories of its employees. For example, a company might want to provide preferential access to the Internet to its top-level management.

Additional features for this segment are:

- Provides consistent, predictable guaranteed bandwidth for Video and Audio Streaming applications
- Maximizes the traffic flow efficiency and reduce Internet abuse by login based priority Fully featured firewall functionality including NAT
- Provides Web Proxy functionality
- Web Traffic Caching (optional)

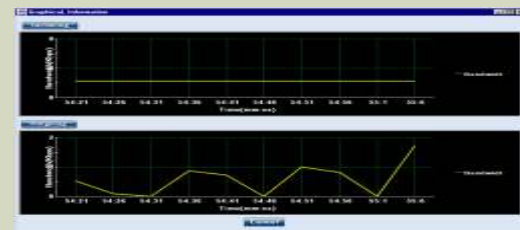
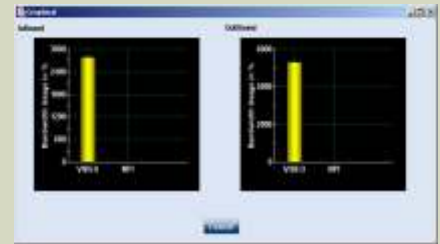
## System Requirements

### Minimum H/W

- **Requirements**
- Pentium III, 500Mhz
- 256 MB RAM
- 20 GB Disk space

### Minimum S/W Requirements

- Red Hat Linux 7.2/8.0 (Web Based GUI)



For further queries please contact: [marketing@networkprograms.com](mailto:marketing@networkprograms.com)

### Contact Us

#### Network Programs USA Inc.

CA-Mountain View Down Town  
800 West El Camino Real,  
Suite 180 Mountain View,  
CA 94040, USA  
Tel : +1-650-903-2210 Fax : +1-650-564-9425

#### Network Programs Australia Pty. Ltd.

Level 17, BNP Centre  
60 Castlereagh Street  
Sydney, NSW 2000  
Tel : 612-9231-7499

#### Network Programs (India) Ltd.

C-164 Sector 63,  
Noida-201301,  
Tel: +91-120-402 2100  
Fax: +91-120-402 2111

#### Network Programs Japan Inc.

Nissho Bldg 3F, 2-2-8,  
Ginza Chuo-Ku,  
Tokyo-104-0061  
Tel : +81-3-3535 8591  
Fax : +81-3-3535 8593

1430 Armitage Way  
Mechanicsburg  
PA 17050, USA  
Tel : +1-717- 728 -8811 Fax : +1-717- 728 -8887